



# IFC

Institutional Furniture Concepts ~ for growing up people



K → 12

# Contents

**At IFC (Institutional Furniture Concepts) we believe the marketplace doesn't need another "me too" product that you'll have to replace in 3 years. If we can't design and produce educational furniture that offers new function or cost benefits to the buyer then we simply don't make it. Every item in our line is designed with an ear to the market and to the highest specifications possible.**

**Over the years, students graduate, teachers retire and even curriculums change, but our furniture will be there to see it all and still be holding up. IFC is "built strong because it's tough out there."**



*Testing and research continues. To best meet the needs of our customers IFC reserves the right to improve and change models, specifications and design without notice.*

Combination student desks	3
Student desks	4 – 5
Activity tables	6 – 8
e-performance tables for art and science	9
Computer tables	10
Multipurpose tables	11
Seating	12 – 14
Tops	15
Keyboards	15

This brochure was designed to give the reader a representation of our broad product line; for further information and complete specifications refer to our Buyers Guide, or log on to our web sites:

**[institutionalfurnitureconcepts.com](http://institutionalfurnitureconcepts.com) and [horizonseating.com](http://horizonseating.com).**

*Please note that table height measurements are approximate. Subject to a variance of (+/-) of .5" (1/2"), the variance is due to the thickness of the various tops that we offer.*

*With the addition of the optional casters for the applicable tables; the casters will increase the height by approximately 3.75". Optional casters are currently available for E series and C series frames.*

## Warranty

### Seating – 15 Year Limited Warranty

IFC extends a 15 year warranty on all non-moving metal components to the original owner of our seating products. All bases, gas cylinders, plastic components and mechanisms are warranted for 5 years, all wooden parts and upholstery materials for 2 years. This limited warranty protects the purchases against material defects and sub-standard workmanship. Decisions concerning the appropriateness of warranty repair or replacement will be determined by IFC. It does not cover labor, transportation or any other incidental charges incurred during the warranty repair or replacement. Further, it does not apply to products that are abused, misused, altered, or damaged in shipment or storage as determined by IFC. Further products assembled incorrectly, inadequately inspected or maintained or altered in any manner shall not be covered.

There are no other implied or other expressed warranties beyond what is expressed here.

### Desk & Table Frames – 15 Year Limited Warranty Desk & Table Tops – 3 Year Limited Warranty

IFC warrants that its tables and desks shall be free of all substantial defects in original material and workmanship for 15 years. This limited warranty does not cover defects, damage or malfunction resulting from abuse, misuse or damaged in shipment or storage as determined by IFC. Further, products assembled incorrectly, inadequately inspected or maintained shall not be covered. Cosmetic flaws caused by normal wear and tear are not covered under warranty. Any or all unapproved alterations to any product or component shall void any warranty. IFC may repair or replace any product deemed covered by this warranty at its discretion; this limited warranty does not cover labor, transportation or any other incidental charges incurred during the warranty repair or replacement.

# Desks & combinations



**P series : Student Desk**  
Shown with Performance top in Grey Glace.



Bag Hook

Shown with custom pencil groove and belly curve top. Available with sufficient quantities and time.



The matching 1115 chair is designed to stack for easy cleaning.



Shown with our unique 8 sided Performance Top featuring a comfort front edge. Designed for grouping in the classroom.



3" 'belly room' adjustment between chair and desk.

## **CP series : CPB2026**

A double entry desk/chair combination with European styling and featuring a unique 'belly room' adjustment. Shown with Performance Top in Grey Glace.

## **P series**

European styling. Constructed from oval tubular steel, silver powder coated with nylon glides and bag hook.  
Options:  
Book box (see page 5) and felt floor protectors.

Available in either:  
27" or 30" height

### Standard Sizes

18 x 24"	DPS1824
20 x 26"	DPS2026
18 x 28"	DPS18280C
8 sided	

## **CP series**

A double entry desk/chair combination featuring a unique 'belly room' adjustment and European styling.

Options:  
Wire book basket and felt floor protectors.

Height: 30"

### Standard Sizes

18 x 24" Navy	CPN1824
18 x 24" Black	CPB1824
20 x 26" Navy	CPN2026
20 x 26" Black	CPB2026

Custom top sizes, seat and frame colors may be available given sufficient quantities and time.

# Desks &

## *i* series

Adjustable welded steel construction with nylon guides and bag hook.

**Adjustable height :**  
24 to 29.25"

### Standard Sizes

18 x 24" DIS1824  
20 x 26" DIS2026

Custom sizes available



*i* series DIS2026  
Shown with Premium top with Lotz edging.



*u* series DUB2026  
Shown with Value top in Grey Nebula.

## *u* series

Fixed height welded square tubular frame. Black epoxy finish with nylon glides.

**Height: 30"**

### Standard Sizes

18 x 24" DUB1824  
20 x 26" DUB2026

## *g* series

Single and double student desks are made from 1.25 x 1.25" square tubular heavy gauge steel with welded corner gussets for additional strength. Powder coated black, and fitted with chrome height adjustable legs with position coding and nylon leveling glides. Option: Locking Casters

**Adjustable height**  
21 to 29.75"

### Standard Sizes

Single

18 x 24" DGC1824  
20 x 26" DGC2026

Double

24 x 48" DGC2448  
24 x 60" DGC2460



*g* series :  
Double Student Desk  
with optional steel Book Box  
1.25" Birch HPL top  
with Lotz Armor Edge®



*g* series : Single Student Desk  
with optional leg cross brace and  
steel Book Box. 1.25" Teal Fusion  
HPL top with Lotz Armor Edge®

Custom top sizes, seat and frame colors may be available given sufficient quantities and time.



# combinations



*d* series : Double Student Desk  
and optional steel Book Boxes  
1.25" Artesia top with  
Lotz Armor Edge®



*d* series : Single Student Desk  
and optional steel Book Box  
1.25" Teal Nebula top  
with Lotz Armor Edge®

*CS* series : CSN2026  
A double entry desk/chair  
combination. Shown with Value  
HPL top in Grey Nebula.



## *d* series

Single and double student desks are made from heavy gauge steel, powder coated black, and fitted with adjustable nylon leveling glides.

Adjustable height :  
25.25 to 31"

### Standard Sizes

#### Single

18 x 24"	HASD1824
20 x 26"	HASD2026

#### Double

24 x 48"	HASD2448
24 x 60"	HASD2460

Custom sizes available

## *CS* series

A double entry desk/chair combination, available with a variety of top sizes and finishes.

Height: 30"

### Standard Sizes

18 x 24" Navy	CSN1824
18 x 24" Black	CSB1824
20 x 26" Navy	CSN2026
20 x 26" Black	CSB2026

Custom sizes available

### Optional Book Boxes for the *d*, *g*, *i* & *p* series



Molded plastic



Coated wire



Perforated steel

Custom top sizes, seat and frame colors may be available given sufficient quantities and time.

## e series

Extra heavy gauge steel construction with 2" square legs, finished in powder coated black and chrome. Full perimeter frame. Legs are coded for easy adjustment and fitted with adjustable nylon leveling glides. Option: Locking Casters

**Adjustable height\***  
21 to 29.75"

### Standard Sizes

24 x 48"	TEC2448
24 x 60"	TEC2460
30 x 60"	TEC3060
36 x 60"	TEC3660
42 x 60"	TEC4260
30 x 72"	TEC3072
36 x 72"	TEC3672
42 x 72"	TEC4272
36 x 72" Kidney	TEC3672-KID
48 x 72" Kidney	TEC4872-KID
48" Round	TEC48R
60" Round	TEC60R

## g series

Steel construction finished in powder coated black and chrome. Full perimeter frame with gusseted corners. Legs are 1.25" square, coded for easy adjustment and fitted with adjustable nylon leveling glides.

**Adjustable height\***  
21.25" to 30.25"

### Standard Sizes

24 x 48"	TGC2448
24 x 60"	TGC2460
24 x 72"	TGC2472
30 x 48"	TGC3048
30 x 60"	TGC3060
30 x 72"	TGC3072
24 x 48" Trapezoid	TGC2448-TPZ
30 x 60" Trapezoid	TGC3060-TPZ

\* Optional extended height legs are available for both the e & g series activity tables.

e series: 27 to 36"  
g series: 24 to 33"

Custom top sizes, seat and frame colors may be available given sufficient quantities and time.

# Activity



**e series : Activity Table**  
Shown here is a TEC2448 with 1.25" Granite HPL top with Lotz Armor Edge®



**e series : Round Table**  
This TEC48R features a 1" Grey Nebula HPL top with 2mm Edge Banding



**g series : Activity Table**  
The TGC3060 is shown with Performance top in Grey Glace.

# tables



*d* series : Rectangular Activity Table  
1.25" Bannister Oak Top with Lotz  
Armor Edge®



*t* series : Training Table  
Shown with Performance  
top in Grey Glace.

Shown with front mount crank;  
optional top mount crank also  
available, see page 10.



*C* series : Rectangular Activity Table  
1.25" Bannister Oak Top with Lotz  
Armor Edge®

## *d* series

Activity tables are made from heavy gauge steel, powder coated black, and fitted with adjustable nylon leveling glides.

**Adjustable height :**  
25.25 to 31"

### Standard Sizes

24 x 48"	HAAT2448
24 x 60"	HAAT2460
30 x 48"	HAAT3048
30 x 60"	HAAT3060
30 x 72"	HAAT3072+
36 x 60"	HAAT3660+
36 x 72"	HAAT3672+

+ Optional 'third leg' available

## *t* series

Fixed height oval tubular steel construction with offset cantilever legs, and silver epoxy finish. Nylon levelling glides.

**Height :** 30"

### Standard Sizes

20 x 26"	TTS2026
24 x 48"	TTS2448
24 x 60"	TTS2460
24 x 72"	TTS2472
30 x 48"	TTS3048
30 x 60"	TTS3060
30 x 72"	TTS3072

## *C* series

Infinitely variable height from 23 to 32" by removable crank handle without clearing the table. Steel pedestal leg finished in black epoxy with nylon leveling glides.

Optional: Locking casters.

Many models meet  
ADA specifications  
for wheelchair  
accessibility.

**Adjustable height:**  
23 to 32.75"

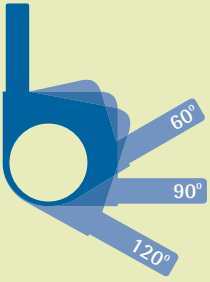
### Standard Sizes

24 x 48"	CRAT2448
24 x 60"	CRAT2460
30 x 36"	CRAT3036
30 x 48"	CRAT3048
30 x 60"	CRAT3060

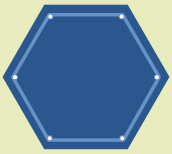
Custom top sizes, seat and frame colors may be available given sufficient quantities and time.



# Custom shape activity tables



The key to the *V* series, is our corner bracket which is produced in 3 optimum angles. By combining the brackets with custom length steel support bars, we can create a frame which will support any shape of table."



Fixed height leg  
Adjustable height leg showing flush head screws at 1" increments.

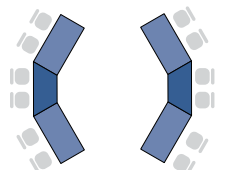
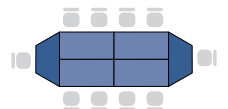
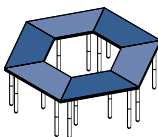
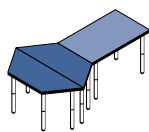


Large 2" diameter nylon leveling glides with internal threads. Unique design eliminates dust and dirt build up from around the leveling screw.

Adjustable height legs:  
23.75 to 30.75"  
Fixed height leg: 30"

## The *V* series table system

enables us to design and build beautiful, fully supported tables in almost any shape or size. Our unique polished aluminum angle brackets and custom sized chrome frame bars give you the option of building a single large specialty shaped table or combining smaller free standing units for more versatility. Whichever you choose, you will own a stylish work surface that is strong, durable and stable. All *V* series tables are available with fixed or adjustable height legs.





# Science lab & art room tables

## e performance

### Top Features

- ~ Plywood/Particleboard combination core
- ~ Unique layered epoxy resin finish
- ~ Superior chemical resistant properties
- ~ Completely sealed against moisture penetration
- ~ Beautiful ultra smooth seamless surface ensures easy cleaning.
- ~ Performance Tops are stocked in Grey Glace and Graphite Nebula



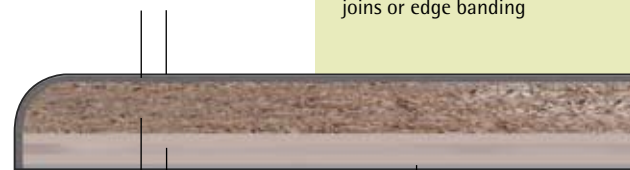
### Chemical Resistance Comparison

The industry standard SEFA 8, 1999 testing procedure was used and the 23 hardest chemicals were chosen from the 49 chemicals listed in the standard.

Product	Total Number of Failures
Trespa Toplab Plus	3
Epoxy Resin	10
Trespa Athlon	15
Chemical Resistant Plastic Laminate	15
Solid Surface	17
Phenolic Resin	20

SEFA testing results are a representative comparison between a variety of finishes used within the industry. IFC Performance tops were not specifically tested by this organization.

Two layers of epoxy-fibreglass cloth plus a heavy epoxy-resin coat



Note: The whole top is completely sealed in epoxy resin. There are no seams, joins or edge banding

Combination Core – Particle board provides rigidity while plywood ensures optimum screw holding strength

Two layers of epoxy-fibreglass cloth plus an epoxy resin coat

## e series

Extra heavy gauge steel construction, finished in powder coated black and chrome. Full perimeter frame. Legs are coded for easy adjustment and fitted with adjustable nylon leveling glides.  
Option: Locking Casters

**Adjustable extra height\***  
27" to 36"

### Standard Sizes

24 x 48"	SAT2448
24 x 60"	SAT2460
30 x 60"	SAT3060
42 x 60"	SAT4260
30 x 72"	SAT3072
36 x 72"	SAT3672

Custom top sizes, seat and frame colors may be available given sufficient quantities and time.

# Computer tables

## g series

**Adjustable height**  
21.25 to 30.25"

### Standard Sizes

30 x 72"	TGC3072-FLP
24 x 48"	CGC2448
24 x 60"	CGC2460
30 x 60"	CGC3060
30 x 72"	CGC3072

Custom sizes available



### g series Computer Work Table

Shown with the optional flip top. Steel construction finished in powder coated black and chrome. Full perimeter frame with gusseted corners. Legs are coded for easy adjustment and fitted with adjustable nylon leveling glides.



### g series Computer Work Table

Shown here with flip top wire management system.

## e series

**Adjustable height\***  
21 to 29.75"

Option: Locking casters

### Standard Sizes

24 x 48"	CEC2448
24 x 60"	CEC2460
30 x 48"	CEC3048
30 x 60"	CEC3060
30 x 72"	CEC3072

Custom sizes available



### e series Computer Work Table

Heavy gauge steel construction finished in powder coated black and chrome. Full perimeter frame. Legs are coded for easy adjustment and fitted with adjustable nylon leveling glides. Shown here with grey Nebula top with edgebanding

## d series

**Adjustable height**  
25.25 to 31"

### Standard Sizes

24 x 24"	HACT2424
24 x 48"	HACT2448
24 x 60"	HACT2460
30 x 48"	HACT3048
30 x 60"	HACT3060
30 x 72"	HACT3072

Custom sizes available

### d series : Computer Work Table

Made from heavy gauge steel, powder coated black epoxy, and fitted with adjustable nylon leveling glides. Shown here with a custom white frame, a Grey Nebula top and edge banding.



### C series Computer Work Table

Without removing computer equipment from the table, the height can be infinitely adjusted between 23 and 32" by virtue of a crank mechanism with a removable handle. The handle that can be mounted for use either on the top (as shown) or at the front (see page 7). Steel frame with black epoxy finish and nylon leveling glides. Shown here with Granite HPL top with Lotz Armor Edge.®

## C series

**Adjustable height :**  
23 to 32.75"

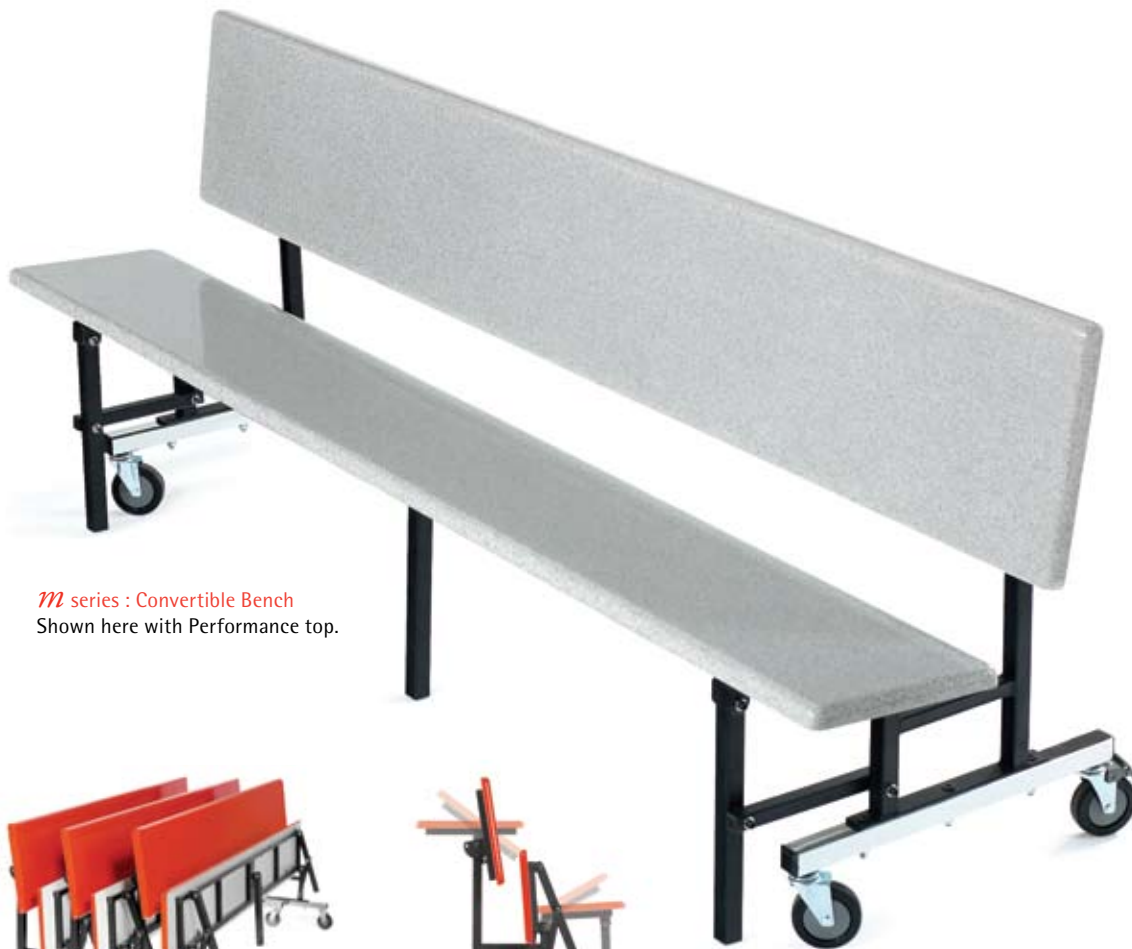
Option: Locking casters

### Standard Sizes

30 x 36"	CRCT3036
24 x 48"	CRCT2448
30 x 48"	CRCT3048
24 x 60"	CRCT2460
30 x 60"	CRCT3060

Custom sizes available

# Multipurpose tables



## *m* series

This multi purpose bench easily converts to a lunchroom table and folds for nesting storage. Heavy square tubular steel construction finished in black epoxy and chrome. Heavy duty casters with positive lock safety mechanism.

### Standard Sizes

72 x 30" H BMB7230  
96 x 30" H BMB9630

*m* series : Convertible Bench  
Shown here with Performance top.



*st* series High Round Table  
Shown with Performance top.

## *st* series

Simple heavy gauge steel construction with 26" base.

Available heights  
30" or 42"

### Standard Sizes

42" Round TEC42R-CST  
48" Round TEC48R-CST

# Student

## *p* series

Seating designed to compliment the *p* series desk. See page 3. Standard shell colours are black and navy. Other shell colours available with sufficient quantities and time.

Optional:

Wire book basket and felt floor protectors.

**Available seat heights:**

13.5", 15.5" or 17.5"



*p* series : 1115

Polypropylene shell with 14 gauge oval frame finished in silver powder coat.



*p* series : 1118

Polypropylene shell with 14 gauge round tube frame finished in silver powder coat.



**102C** With fabric seat, arms and casters.

**102** With fabric seat and arms.

**101C** With fabric seat and casters.

**101** With fabric seat.



**100PP chair**

With poly back and seat, and a sled frame.



**110S chair**

With poly back and seat, and silver epoxy coated frame.

# seating



## 113P

Polypropylene seat and back on a chrome steel frame. Shown above with writing tablet and book basket. Also available with cushions.  
Note: When writing tablet and book basket are fitted the chair is not stackable.



## 1150-60 Bench

Solid wood seat 2.5" thick on heavy gauge full support frame with powder coated finish.  
Length 60", depth 18", height 17".



## 1120 Stool

Maple seat on a 16 gauge powder coated square tubular frame and nylon floor saving guides.  
Available with Performance seat made from reinforced resin with a Gelcoat finish.  
Available heights: 18", 20" and 24".  
Adjustable height available mid 2008.



# Task seating

We have a comprehensive range of task chairs and seating, plus more choices available from our sister company Horizon Seating. Please call us or view our websites for more information:

[www.institutionalfurnitureconcepts.ca](http://www.institutionalfurnitureconcepts.ca)

[www.horizonseating.com](http://www.horizonseating.com)



**HZ1405**

Simple posture adjustment, excellent choice for student labs.



**HZ1410**

Fully adjustable, comes standard with height and width adjustable arms.



**HZ4000MF**

Fully adjustable, generous seat and back cushions.



**2100J**

Self skinned polyurethane chair, excellent choice for science labs.



**781**

Low back tilter.



**782**

High back tilter.



**920SM**

Full featured mesh task chair and guest seating for the updated environment.



**922M**



**512**

Fully adjustable tilter with matching guest chairs.



**510**

# Trays & ...



## AKT4M : Twist Keyboard

- ~ Height (5" range) and angle ( $\pm 15^\circ$  degrees) adjustable
- ~ Gel filled wrist support
- ~ Anti-skid, anti-static matting
- ~ Low profile for maximum knee clearance
- ~ Retractable mouse tray mounts on left or right
- ~ Shipping weight 17lbs



## MKT-27M : Keyboard Support

- ~ All steel construction
- ~ Ball bearing slides
- ~ Height and angle adjustable
- ~ Gel filled wrist support
- ~ 27" tray with anti-skid, anti-static matting
- ~ Low profile for maximum knee clearance
- ~ Shipping weight 13lbs



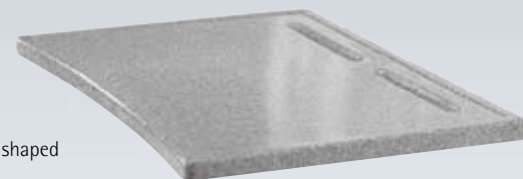
# Tops

We have many finishes, specifications and budgets – the choice is yours.

High pressure laminates in .75", 1.0" or 1.25" thickness; our **Value** tops have an edge banding finish, and our **Premium** series of tops are finished with an ultra durable, spray on, Lotz Armor Edge. All laminate tops are available in an almost endless array of colors and texture.

Or choose our market leading **Performance** tops, a wood core covered in multiple layers of reinforced epoxy resin and a color Gelcoat finish. Performance desk and table tops are a chemical resistant completely sealed surface, thereby eliminating the need for any additional edge finish. The underside of all our tops are finished in a manner to prevent moisture penetration and ensure structural strength.

Special applications are not a problem, Chemsurf treatment and chemical resistant core materials are available for the laboratory or shop and maple butcher block can be ordered for food preparation areas or gymnasiums.



Performance tops can be shaped for special applications.



# IFC

Institutional Furniture Concepts



**T: 1.800.808.9878** F: 604.421.9818  
e: [info@institutionalfurnitureconcepts.com](mailto:info@institutionalfurnitureconcepts.com)  
[www.institutionalfurnitureconcepts.com](http://www.institutionalfurnitureconcepts.com)